



Industria Ambrosiana Filati Spa



**Una Collezione fatta di contrasti morbidi,
di materiali soft e di colori forti.
Di preziosissimi posh
in contrasto con mani laniere e ancestrali.
Di fibre concettuali espresse
in semplicità come tendenza.**

CASHMERE & COTTON

Cotone e cashmere in mischia, blend in diverse percentuali, proposte che giocano sulle sfumature: di colore, di peso, di tridimensionalità.

COTTON & WOOL

Costruzioni complesse che appaiono lineari e semplicissime. Lo storytelling che racconta l'inverno: il protagonista sarà il cotone oppure la lana?

ORGANIC

Sostenibilità e tracciabilità. Filati che coniugano la moda con il rispetto per l'ambiente e per le persone. Cotone, lino e seta: proposte nate per conservare il futuro.

LOVE4NATURE: LIFE SILK E PERINO

Life Silk, il filato esclusivo in seta "4Nature" (no cruelty).
Perino by Woolyarn, la mischia nobile di Merino ZQ, Brushtail Possum, cashmere e seta Mulberry. Dalla Nuova Zelanda, dai confini della terra, dal luogo in cui sorge il sole.

ALPACA

In tutte le declinazioni. Dolce, femminile, seducente in unione con la seta. Oppure grintosa, outdoor, sportiva, insieme alla lana e ai filati men-made a tutta performance.

**A Collection created with delicate contrasts, soft
materials and strong shades.
Preciously posh,
almost ancestral and woolen to the touch.
Conceptual yarns expressed
with simplicity are the trend this Season.**

CASHMERE & COTTON

Cotton and cashmere blended together in different percentages, proposals that play with the shading of color, weight and the tridimensional.

COTTON & WOOL

Complicated constructions that appear to be simple and straight. The story telling that spins a tale of winter, will the leading character be the cotton or the wool?

ORGANIC

Sustainability and traceability. Yarns that unite fashion, respecting people and the environment. Cotton, linen, silk proposals that are born to preserve the future.

LOVE4NATURE: LIFE SILK AND PERINO

Life Silk, the exclusive silk yarn "4Nature" (no cruelty).
Perino by Woolyarn, the noble mix of Merino ZQ, Brushtail Possum, cashmere and Mulberry silk. From New Zealand, from the edge of the earth to the place where the sun rises.

ALPACA

In all variations. Sweet, feminine, seductive united with silk or brave, outdoor and sporty when mixed with wool or manmade fibers for all performances.



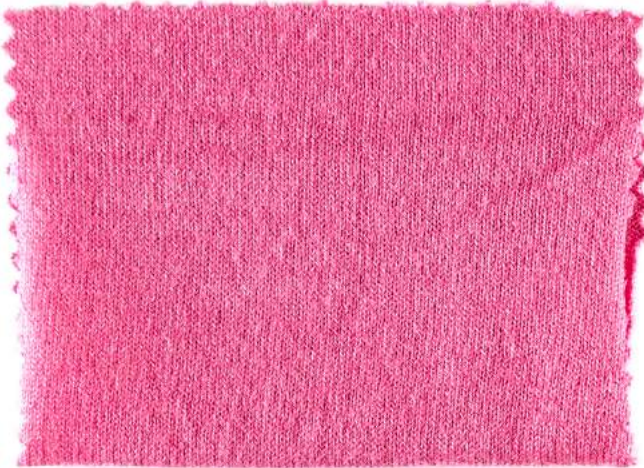
CASHMERE & COTTON

MICHELANGELO

50% cashmere [ws] 50% Supima cotton [co]
Nm 2/100.000-3/100.000-4/100.000
finezza/gauge 21-18-14-12



STOCK SERVICE *



SEA CASHMERE 2/48

85% peruvian pima cotton [co] 15% cashmere [ws]
Nm 2/48.000
finezza/gauge 18-14



STOCK SERVICE



MAGIA

85% peruvian pima cotton [co] 15% cashmere [ws]
Nm 2/48.000x16
finezza/gauge 3



STOCK SERVICE *



SEA CASHMERE 5000

85% peruvian pima cotton [co] 15% cashmere [ws]
Nm 2/48.000x5
finezza/gauge 5



STOCK SERVICE *



SEA CASHMERE 6000

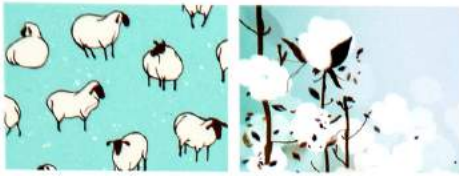
85% peruvian pima cotton [co] 15% cashmere [ws]
Nm 8/48.000
finezza/gauge 7-5



STOCK SERVICE *

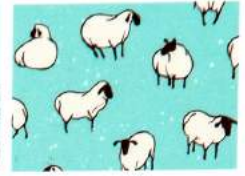


Filati prodotto da componenti in Stock Service / Yarn made by single components in Stock Service



Industria Italiana Filati per

COTTON & WOOL



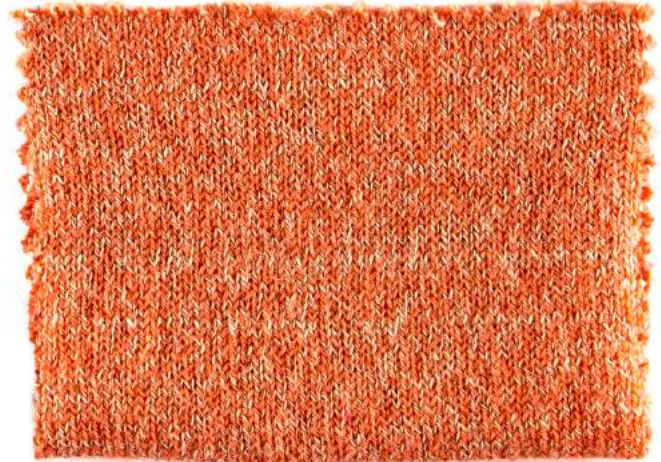
RUBENS

60% pima cotton [CO]
40% lana merino [WO]
Nm 3/50.000
finezza/gauge 12



REMBRANDT

67% lana merino [WO]
33% pima cotton [CO]
Nm 3/48.000
finezza/gauge 12



MADEIRAS

54% lana extrafine [WO] 46% peruvian pima cotton [CO]
Nm 2/48.000-2/48.000x2 cablé
finezza/gauge 18-14-12



STOCK SERVICE *



BRIO

50% lana extrafine [WO] 43% peruvian pima cotton [CO]
7% cashmere [WS] - Nm 2/48.000
finezza/gauge 18-14



STOCK SERVICE *





ORGANIC COTTON AND LINEN



Organic
Certified by ICEA [GOTS 2017-085]

ORGANIC PURO 21

100% Organic cotton ELS [CO]
Nm 2/100.000
finezza/gauge 21-18



ORGANIC PURO 18

100% Organic cotton ELS [CO]
Nm 3/100.000
finezza/gauge 18



Organic
Certified by ICEA [GOTS 2017-085]



Organic
Certified by ICEA [GOTS 2017-085]

ORGANIC PURO 14

100% Organic cotton ELS [CO]
Nm 4/100.000
finezza/gauge 14



Organic
Certified by ICEA [GOTS 2017-085]

ORGANIC 12-14

100% Organic cotton ELS [CO]
Nm 3/50.000-2/50.000
finezza/gauge 12-14



BIO FLAX

100% Organic linen [LI]
Nm 2/26.000
finezza/gauge 12



Organic
Certified by ICEA [GOTS 2017-085]



SILK



Organic
Certified by ICEA [GOTS 2017-085]

ORGANIC SILK

100% Organic Mulberry silk shappe [SE]
Nm 2/120.000-2/120.000x2
finezza/gauge 18



SETA 2/120

100% Mulberry silk shappe [SE]
Nm 2/120.000
finezza/gauge 18

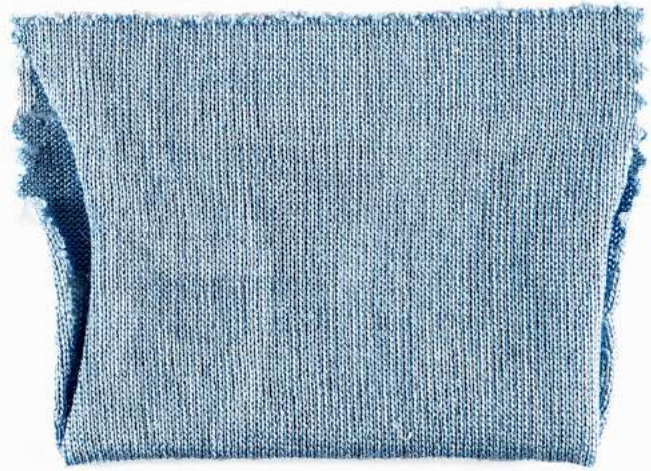


STOCK SERVICE



LIFE SILK

100% No Cruelty Mulberry silk shappe [SE]
Nm 2/120.000-2/120.000x2
finezza/gauge 18



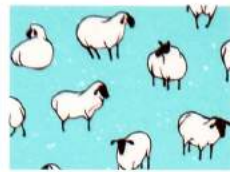
SETA 2/120x2

100% Mulberry silk shappe [SE]
Nm 2/120.000x2
finezza/gauge 18



STOCK SERVICE





Industria Italiana Filati S.p.A.

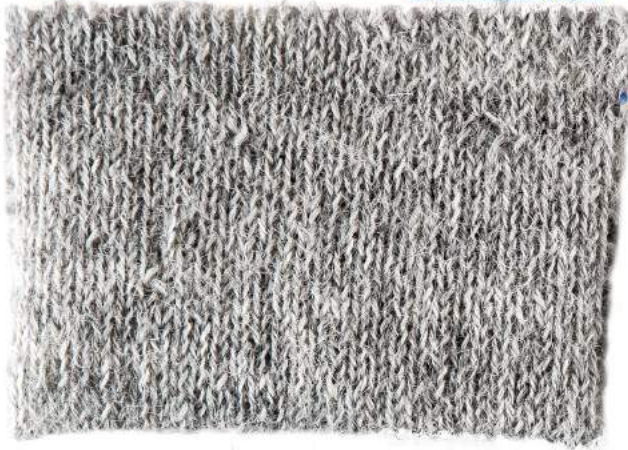
ALPACA &



PURE LOVE 7

100% alpaca superfine [WP]
Nm 2/16.000
finezza/gauge 7

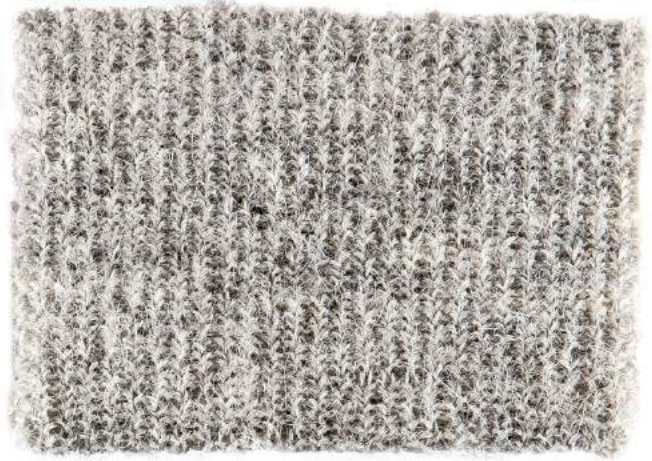
STOCK SERVICE



PURE LOVE 12

100% alpaca superfine [WP]
Nm 2/25.000
finezza/gauge 7-12

STOCK SERVICE*



SOFT ALPACA

50% alpaca superfine [WP] 50% lana merino [WO]
Nm 2/14.000
finezza/gauge 7

STOCK SERVICE*



HUNTER

25% alpaca superfine [WP] 75% lana merino [WO]
cardato - Nm 2/12.000-3/12.000
finezza/gauge 7-5-3

STOCK SERVICE



BABY ALPACA 2/28

100% baby alpaca [WP]
Nm 2/28.000
finezza/gauge 12-7

STOCK SERVICE



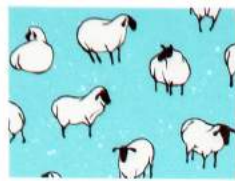
BABY SETA

85% baby alpaca [WP] 15% Mulberry silk shappe [SE]
Nm 2/30.000
finezza/gauge 12-14

STOCK SERVICE



* Filato prodotto da componenti in Stock Service / Yarn made by single components in Stock Service



Industria Italiana Filati S.p.A.

ALPACA &



GLEE 2/48

35% baby alpaca [WP] 15% lana merino [WO]
50% poliammide [PA]
Nm 2/48.000
finezza/gauge 18-14



SOL

35% alpaca [WP] 15% lana merino [WO]
50% acrilico [PC]
Nm 3/12.000 - finezza/gauge 5-3
STOCK SERVICE



ALPACA HB 12

30% alpaca superfine [WP] 35% lana merino [WO]
35% dralon [PC]
Nm 2/28.000 - finezza/gauge 7-12
STOCK SERVICE *



ALPACA HB 5

30% alpaca superfine [WP] 35% lana merino [WO]
35% dralon [PC]
Nm 2/12.000 - finezza/gauge 7-5-3
STOCK SERVICE *



ALPACA HB 1

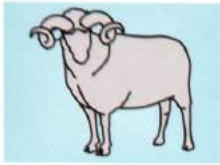
30% alpaca superfine [WP] 35% lana merino [WO]
35% dralon [PC]
Nm 1.200 - finezza/gauge 3
STOCK SERVICE *



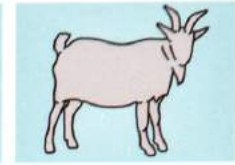
WARP ALPACA

30% alpaca superfine [WP] 35% lana merino [WO]
35% dralon [PC]
Nm 1.900 - finezza/gauge 3
STOCK SERVICE *





PERINO



ALTO

70% lana merino ZQ [WO]
30% Brushtail Possum Down [HA]
Nm 2/28.000
finezza/gauge 12-7

STOCK SERVICE

PERINO
BY WOOLYARNS



NIMBUS

65% lana merino fine [WO] 25% Brushtail Possum Down [HA]
10% Mulberry silk shappe [SE]
Nm 2/28.000-2/36.000-2/18.000
finezza/gauge 12-7-5

STOCK SERVICE

PERINO
BY WOOLYARNS



CIRRUS

40% cashmere [WS] 40% Brushtail Possum Down [HA]
20% Mulberry silk shappe [SE]
Nm 2/28.000-2/36.000
finezza/gauge 12-14

STOCK SERVICE

PERINO
BY WOOLYARNS

